

Gel documentation system

portable gel documentation system with integrated camera and software



WGD-20 Gel documentation system

Ideal for:

- DNA, RNA gel imaging capture and analysis

Features:

- the most cost-effective system
- high precise and large calibre optical lens with zoom, focus and iris control
- digital CCD camera (resolution 1360x1024, 1.5 m pixel) with portable darkroom 10-bit CCD, available for 8-bit grey level image capturing
- very compact portable darkroom system for highest flexibility
- existing transilluminator can be used
- USB 2.0 interface for real-time images and data transfer
- power supply via USB
- WiseCapture II™ software: easy and fast view, capture and save gel images (included)
- TotalLab™ Quant software (WGD-20S): fully automatic, single button press complete image analysis in interesting area
- CE certified and unique serial number for tracing

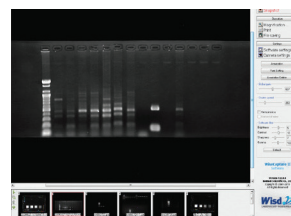
Model	WGD-20	WGD-20S
CCD & pixel size	1/2" CCD, 4.65 x 4.65 um	
Lens mount & optical size	C mount, 7.6 x 6.2 mm	
Interface & Power	USB 2.0	
Iris & focal length	F1.0-close, 8 - 48 mm	
Operation temperature	-10°C to +50°C	
Software capability	Windows XP, Vista & 7	
DNA analysis software included	WiseCapture II™	WiseCapture II™ TotalLab™ Quant
Dimension & weight	260 x 260 x 430 mm, 9 kg	
Packing size	400 x 350 x 510, 18 kg	
Order number	DH.WGD00020	DH.WGD00024

Scope of supply:

- gel documentation system with CCD camera
- WiseCapture II™ software
- TotalLab™ Quant software (only WGD-20S)



WiseCapture II™ software
easy and fast view, capture and save gel images included



TotalLab™ Quant
automatic and manual lane detection, background subtraction, fully automatic band detection, molecular size / pI calibration, quantity calibration, normalization

more information on page 203

Accessories: Suitable UV transilluminator and software can be found on page 204